

UDC 595.78(477.61)

DOI: 10.36016/KhESG-2023-31-1-2

© 2023 S. O. DEMYANENKO

NEW RECORDS ON LEPIDOPTERA (INSECTA) OF THE NORTHWESTERN ENVIRONS OF LYSYCHANSK (LUHANSK REGION, UKRAINE)

Дем'яненко, С. О. Нові знахідки лускокрилих (Insecta: Lepidoptera) північно-західних околиць Лисичанська (Луганська область, Україна). *Вісті Харківського ентомологічного товариства*. 2023. Т. XXXI, вип. 1. С. 8–23. DOI: 10.36016/KhESG-2023-31-1-2.

Наведено анотований список нових знахідок лускокрилих північно-західних околиць Лисичанська (Березове, Білогорівка, Шипілівка). Список містить 204 нові для околиць Лисичанська види, з яких 7 видів (*Stigmella catharticella* (Stainton, 1853), *Nemophora metallica* (Poda, 1761), *Whittleia undulella* (Fischer von Röslerstamm, 1837), *Apterona helicoidella* (Vallot, 1827), *Bucculatrix thoracella* (Thunberg, 1794), *Argyresthia spinosella* Stainton, 1849, *Eurrhysis pollinalis* ([Denis et Schiffermüller], 1775)) уперше вказані для території Луганської області. Загалом у північно-західних околицях Лисичанська відмічено 233 види Lepidoptera.

24 рис., 8 назв.

Ключові слова: Lepidoptera, лускокрилі, фауна, степ, крейдяні відслонення, Луганська область, Україна.

Demyanenko, S. O. New records on Lepidoptera (Insecta) of the northwestern environs of Lysychansk (Luhansk Region, Ukraine). *The Kharkov Entomological Society Gazette*. 2023. Vol. XXXI, iss. 1. P. 8–23. DOI: 10.36016/KhESG-2023-31-1-2.

An annotated list of new records of butterflies and moths of the northwestern environs of Lysychansk (Berezove, Bilohorivka, Shypylyvka) is provided. The list includes 204 species registered in the research area for the first time, 7 of which (*Stigmella catharticella* (Stainton, 1853), *Nemophora metallica* (Poda, 1761), *Whittleia undulella* (Fischer von Röslerstamm, 1837), *Apterona helicoidella* (Vallot, 1827), *Bucculatrix thoracella* (Thunberg, 1794), *Argyresthia spinosella* Stainton, 1849, *Eurrhysis pollinalis* ([Denis et Schiffermüller], 1775)) are new records for Luhansk Region. Totally, there are 233 species of Lepidoptera registered in the NW environs of Lysychansk.

24 figs, 8 refs.

Keywords: Lepidoptera, butterflies and moths, fauna, steppe, chalk hills, Luhansk Region, Ukraine.

Демьяненко, С. А. Новые находки чешуекрылых (Insecta: Lepidoptera) северо-западных окрестностей Лисичанска (Луганская область, Украина). *Известия Харьковского энтомологического общества*. 2023. Т. XXXI, вып. 1. С. 8–23. DOI: 10.36016/KhESG-2023-31-1-2.

Приводится аннотированный список новых находок чешуекрылых северо-западных окрестностей Лисичанска (Березово, Белогорівка, Шипілівка). Список включает в себя 204 новых для окрестностей Лисичанска вида, из которых 7 видов (*Stigmella catharticella* (Stainton, 1853), *Nemophora metallica* (Poda, 1761), *Whittleia undulella* (Fischer von Röslerstamm, 1837), *Apterona helicoidella* (Vallot, 1827), *Bucculatrix thoracella* (Thunberg, 1794), *Argyresthia spinosella* Stainton, 1849, *Eurrhysis pollinalis* ([Denis et Schiffermüller], 1775)) впервые приводятся для Луганской области. Всего в северо-западных окрестностях Лисичанска отмечены 233 вида Lepidoptera.

24 рис., 8 назв.

Ключевые слова: Lepidoptera, чешуекрылые, фауна, степь, меловые выходы, Луганская область, Украина.

Introduction. The territory of Donbass is one of the most urbanized and anthropogenically transformed territories of Ukraine. Despite this, due to the complex relief and rocky outcrops, many small steppe fragments with high local biodiversity of Lepidoptera have been preserved here. One of such places are steppe gulches and chalk hills in the NW environs of Lysychansk (Fig. 1–9). Since the spring of 2022, these territories are on the line of hostilities. Little is known about their current state, but they were probably badly damaged by shelling, fires, and the construction of fortifications. Therefore, the information below is valuable for future comparison with the pre-war diversity of the fauna of the cretaceous steppes in the vicinity of Lysychansk.

Lepidoptera of these places is almost unexplored: only 28 species of Tortricidae (Kavurka, Demyanenko, Budashkin, 2021) and 1 species of Nepticulidae (Orlovskytė, Dobrynina, Stonis, 2023) were published prior to this work.

Materials and methods. This paper is based on the material collected and observed by the author in the NW environs of Lysychansk mainly in 2021 (some observations were made in 2013 and 2020). The material was observed, photographed and collected by netting during short daytime bicycle excursions only.

The determination of the material was carried out by the author. The identification by photographs was made only for species with distinct differences in habitus. In difficult cases, the determination was confirmed by the study of the genitalia. Ellis (2022) and Lepiforum (2022) were used for identification of mine. Plant names follow 'Plants of the World Online' (POWO, 2022).

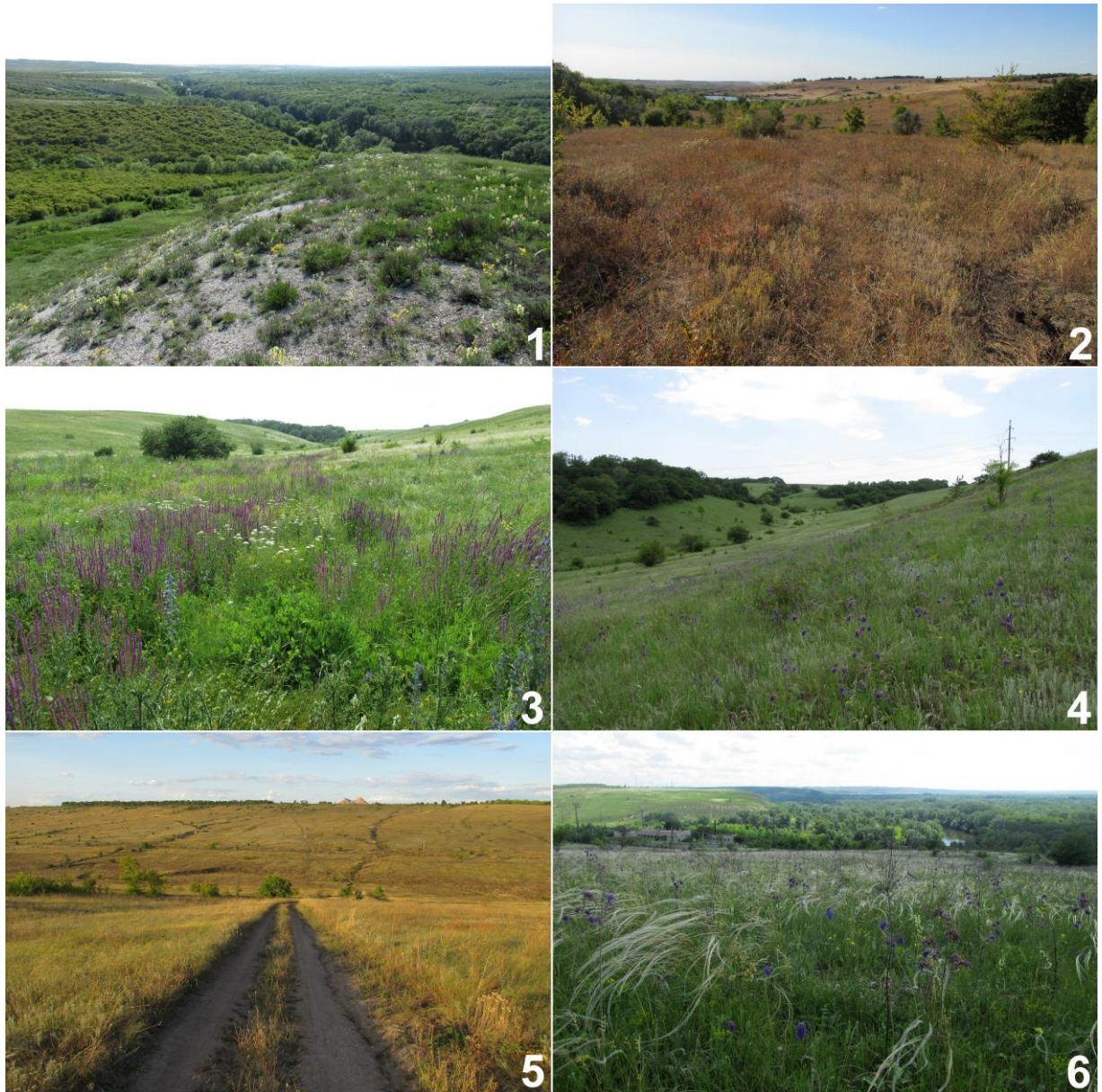


Fig. 1–6. Collection sites: 1 — Bilohorivka, 23.05.2021; 2 — Malyi Sukhodol gulch, 20.09.2020; 3 — gulches ‘Lipovi’, 27.06.2021; 4 — gulch ‘Pidiomna’, 29.05.2021; 5 — Sukhodol gulch, 05.09.2021; 6 — Shpylivka, 06.06.2021.

The material is stored in the collections of the Institute for Evolutionary Ecology of the National Academy of Sciences of Ukraine, Kyiv (further in text IEEK) and the Museum of Nature of the V. N. Karazin Kharkiv National University (further in text MNKU).

Collection sites. Chalk hills over the Siverskyi Donets N of **Bilohorivka** settlement (48.934, 38.230); chalk hills over and forest along the Siverskyi Donets SW of **Shpylivka** village (48.951–48.962, 38.252–38.260); steppe slopes at the mouth of **Sukhodol** gulch (48.945–48.960, 38.260–38.276); branches of Sukhodol gulch — ‘**Berezove** chalk outcrops’ (48.922–48.925, 38.304–38.332), gulches ‘**Lipovi**’ (48.924–48.928, 38.288–38.297), **Malyi Sukhodol** gulch (48.936–48.937, 38.334) and gulch ‘**Pidiomna**’ (48.921, 38.294).

Results and discussions. In the list below all species are new for the NW environs of Lysychansk, an asterisk (*) indicates a species new for Luhansk Region.

The higher system of Lepidoptera follows Nieuwerkerken *et al.* (2011) with corrections from Heikkilä *et al.* (2014).



Fig. 7–9. Collection sites: 1 — ‘Berezove chalk outcrops’, 16.05.2021; 2 — ‘Berezove chalk outcrops’, 28.06.2021; 3 — Shpylivka, 27.06.2021.

Infraorder DACNONYPHA Hinton, 1946

Superfamily ERIOCRANIOIDEA Rebel, 1901

Family ERIOCRANIIDAE Rebel, 1901

***Dyseriocrania subpurpurella* (Haworth, 1828)**

Material. Bilohorivka, 25.04.2021 — 1 sp.

Infraorder HETERONEURA Tillyard, 1918

Superfamily NEPTICULOIDEA Stainton, 1854

Family NEPTICULIDAE Stainton, 1854

***Stigmella prunetorum* (Stainton, 1855)**

Material. Malyi Sukhodol, 24.10.2021 — 3 mines with larvae and 3 empty mines, all on *Prunus cerasus*.

***Stigmella aceris* (Frey, 1857)**

Material. 'Lipovi', 27.06.2021 — 4 mines on *Acer tataricum*, 11.07.2021 — 5 mines on *Acer campestre*.

* ***Stigmella cathartica* (Stainton, 1853)** (Fig. 10)

Material. 'Lipovi', 11.07.2021 — 8 mines on *Rhamnus cathartica*.

***Stigmella tiliae* (Frey, 1856)**

Material. 'Lipovi', 11.07.2021 — 10 mines, 24.07.2021 — 15 mines, all on *Tilia*.

***Stigmella lemniscella* (Zeller, 1839)**

Material. 'Lipovi', 21.06.2021 — 2 mines on *Ulmus*; Shypylyvka, 21.06.2021 — 1 mine on *Ulmus*.

***Stigmella plagicolella* (Stainton, 1854)**

Material. Malyi Sukhodol, 27.06.2021 — 5 mines on *Prunus spinosa*.

***Stigmella basiguttella* (Heinemann, 1862)**

Material. 'Lipovi', 24.10.2021 — 10 mines; 'Pidiomna', 25.07.2021 — 1 mine; Malyi Sukhodol, 24.10.2021 — 1 mine. All mines on *Quercus robur*.

Superfamily ADELOIDEA Bruand, 1850

Family ADELIDAE Bruand, 1850

***Nemophora degeerella* (Linnaeus, 1758) s. l.**

Material. Shypylyvka, 21.06.2021 — 1 sp.

* ***Nemophora metallica* (Poda, 1761)** (Fig. 11)

Material. Berezove, 27.06.2021 — 3 sp.; 'Lipovi', 28.06.2021 — 5 sp., 04.07.2021 — 2 sp.

***Nemophora fasciella* (Fabricius, 1775)**

Material. Berezove, 11.07.2021 — 1 sp.; 'Lipovi', 28.06.2021 — 2 sp.

Superfamily TISCHERIOIDEA Spuler, 1898

Family TISCHERIIDAE Spuler, 1898

***Tischeria decidua* Wocke, 1876**

Material. 'Lipovi', 11.07.2021 — 3 mines, 24.10.2021 — 1 mine, all on *Quercus robur*.

Superfamily TINEOIDEA Latreille, 1810

Family PSYCHIDAE Boisduval, 1829

***Taleporia tubulosa* (Retzius, 1783)**

Material. 'Lipovi', 24.07.2021 — 1 larval case.

* ***Whittleia undulella* (Fischer von Röslerstamm, 1837)** (Fig. 12)

Material. Bilohorivka, 03.05.2021 — 2 ♂♂.

* ***Apterona helicoidella* (Vallot, 1827)** (Fig. 13)

Material. Berezove, 24.07.2021 — 1 case.

Superfamily GRACILLARIOIDEA Stainton, 1854

Family BUCCULATRICIDAE Fracker, 1915

* ***Bucculatrix thoracella* (Thunberg, 1794)** (Fig. 14)

Material. 'Lipovi', 11.07.2021 — 5 sp. on trunks of *Tilia cordata*, 24.07.2021 — 3 mines on *Tilia cordata*.

***Bucculatrix ulmella* Zeller, 1848**

Material. 'Lipovi', 24.10.2021 — 2 mines on *Quercus robur*.

Family GRACILLARIIDAE Stainton, 1854

***Acrocercops brongiardella* (Fabricius, 1798)**

Material. 'Pidiomna', 25.07.2021 — 4 mines on *Quercus robur*.

***Phyllonorycter issikii* (Kumata, 1963)**

Material. 'Lipovi', 11.07.2021 — 5 sp. on trunks of *Tilia cordata* and 2 mines on leaves of *Tilia cordata* (including 1 mine with pupa); 24.07.2021 — 4 sp. on trunks of *Tilia cordata*.

Superfamily YPONOMEUTOIDEA Stephens, 1829

Family YPONOMEUTIDAE Stephens, 1829

***Yponomeuta plumbella* ([Denis et Schiffermüller], 1775)**

Material. 'Lipovi', 24.07.2021 — 1 sp.

Family ARGYRESTHIIDAE Bruand, 1850

****Argyresthia spinosella* Stainton, 1849 (Fig. 15)**

Material. Bilohorivka, 29.05.2021 — 3 sp. on *Prunus spinosa*.

***Argyresthia bonnetella* (Linnaeus, 1758)**

Material. 'Lipovi', 28.06.2021 — 1 sp.

Family PLUTELLIDAE Guenée, 1845

***Plutella xylostella* (Linnaeus, 1758)**

Material. Bilohorivka, 13.06.2021 — 1 sp.; 'Lipovi', 04.07.2021 — 1 sp.; Malyi Sukhodol, 29.05.2021 — 1 sp.; Sukhodol, 05.09.2021 — 10 sp.

Family YPSOLOPHIDAE Guenée, 1845

***Ypsolopha lucella* (Fabricius, 1775)**

Material. Malyi Sukhodol, 21.06.2021 — 1 sp.

***Ypsolopha vittella* (Linnaeus, 1758)**

Material. Malyi Sukhodol, 27.06.2021 — 1 sp. on trunks of *Quercus robur*; 'Lipovi', 11.07.2021 — 1 sp. on trunks of *Quercus robur*.

Family LYONETIIDAE Stainton, 1854

***Leucoptera malifoliella* (O. Costa, [1836])**

Material. Berezove, 27.06.2021 — mines on *Malus domestica*, 11.07.2021 — mines on *Malus domestica*.

Superfamily GELECHIOIDEA Stainton, 1854

Family OECOPHORIDAE Bruand, 1850

***Pleurota pyropella* ([Denis et Schiffermüller], 1775)**

Material. Berezove, 29.05.2021 — 1 sp.

***Pleurota aristella* (Linnaeus, 1767)**

Material. Berezove, 25.07.2021 — 1 sp.

***Holoscolia huebneri* Koçak, 1980**

Material. Bilohorivka, 13.06.2021 — 1 sp.

Family CHIMABACHIDAE Heinemann, 1870

***Diurnea lipsiella* ([Denis et Schiffermüller], 1775)**

Material. 'Lipovi', 24.10.2021 — 8 sp.; Malyi Sukhodol, 24.10.2021 — 2 sp.

Family ELACHISTIDAE Bruand, 1850***Dystebenna stephensi* (Stainton, 1849)**

Material. Malyi Sukhodol, 21.06.2021 — 17 sp., 27.06.2021 — 2 sp., 04.07.2021 — 2 sp., all on trunks of *Quercus robur*.

Family COSMopterigidae Heinemann et Wocke, 1876***Pancalia leuwenhoekella* (Linnaeus, 1761)**

Material. Bilohorivka, 29.05.2021 — 1 sp.

***Pyroderces argyrogrammos* (Zeller, 1847)**

Material. Malyi Sukhodol, 05.09.2021 — 1 sp.

Family GELECHIIDAE Stainton, 1854***Teleiodes luculella* (Hübner, [1813])**

Material. Malyi Sukhodol, 21.06.2021 — 1 sp. on trunks of *Quercus robur*.

***Recurvaria nanella* ([Denis et Schiffermüller], 1775)**

Material. Malyi Sukhodol, 24.10.2021 — 1 mine on *Prunus cerasus*.

Superfamily PTEROPHOROIDEA Latreille, 1802**Family PTEROPHORIDAE Latreille, 1802*****Cnaemidophorus rhododactyla* ([Denis et Schiffermüller], 1775)**

Material. 'Lipovi', 04.07.2021 — 1 sp.

***Pterophorus pentadactyla* (Linnaeus, 1758)**

Material. 'Lipovi', 28.06.2021 — 1 sp.

***Emmelina monodactyla* (Linnaeus, 1758)**

Material. 'Lipovi', 18.09.2021 — 1 sp.

Superfamily COSSOIDEA Leach, 1815**Family COSSIDAE Leach, 1815*****Cossus cossus* (Linnaeus, 1758)**

Material. Shpylivka, 29.08.2021 — 1 adult larva on a road.

Superfamily ZYGAENOIDEA Latreille, 1809**Family ZYGAENIDAE Latreille, 1809*****Zygaena carniolica* (Scopoli, 1763)**

Material. Bilohorivka, 13.06.2021 — 1 larva, 04.07.2021 — 1 sp., 25.07.2021 — 3 sp.

***Zygaena filipendulae* (Linnaeus, 1758)**

Material. Berezove, 24.07.2021 — 1 sp.

Superfamily PAPILIONOIDEA Latreille, 1802**Family PAPILIONIDAE Latreille, 1802*****Parnassius mnemosyne* (Linnaeus, 1758)**

Material. Malyi Sukhodol, 29.05.2021 — 3 sp.; 'Pidiomna', 16.05.2021 — 1 sp., 29.05.2021 — 11 sp.

***Zerynthia polyxena* ([Denis et Schiffermüller], 1775)**

Material. Shpylivka, 16.05.2021 — 1 sp.

***Iphiclides podalirius* (Linnaeus, 1758)**

Material. Bilohorivka, 03.05.2021 — 2 sp., 16.05.2021 — 2 sp., 23.05.2021 — 1 sp.; Berezove, 04.07.2021 — 2 sp., 11.07.2021 — 2 sp.; 'Lipovi', 28.06.2021 — 1 sp.; Sukhodol, 04.07.2021 — 1 sp.

***Papilio machaon* Linnaeus, 1758**

Material. Bilohorivka, 03.05.2021 — 2 sp., 04.07.2021 — 1 sp.; Berezove, 01.08.2021 — 1 sp.

Family HESPERIIDAE Latreille, 1809

***Muschampia proteides* (Wagner, 1929) (Fig. 16)**

Material. Berezove, 24.07.2021 — 1 sp., 01.08.2021 — 7 sp., 22.08.2021 — 4 sp.; 'Lipovi', 01.08.2021 — 2 sp., 22.08.2021 — 2 sp.

***Carcharodus alceae* (Esper, [1780])**

Material. Berezove, 16.05.2021 — 1 sp., 23.05.2021 — 2 sp., 28.05.2021 — 1 sp.; 'Lipovi', 04.07.2021 — 1 sp., 11.07.2021 — 5 sp., 24.07.2021 — 1 sp.; Shpylivka, 04.07.2021 — 1 sp.

***Erynnis tages* (Linnaeus, 1758)**

Material. Bilohorivka, Berezove and 'Lipovi', 03.05.2021 — 60 sp., 16.05.2021 — several tens of sp., 04.07.2021 — 1 sp., 11.07.2021 — 50 sp., 24.07.2021 — 1 sp., 01.08.2021 — 10 sp., 11.07.2021 — 50 sp.; Shpylivka, 24.06.2013 — 1 sp.

***Pyrgus malvae* (Linnaeus, 1758)**

Material. Bilohorivka, 03.05.2021 — 1 sp., 16.05.2021 — 1 sp.; Berezove, 03.05.2021 — 1 sp., 16.05.2021 — 12 sp., 23.05.2021 — 10 sp.

***Pyrgus serratulae* (Rambur, 1839)**

Material. Bilohorivka, 23.05.2021 — 2 sp., 29.05.2021 — 1 sp.

***Pyrgus armoricanus* (Oberthür, 1910)**

Material. Berezove, 27.09.2020 — 1 sp.

***Thymelicus lineola* (Ochsenheimer, 1808)**

Material. Bilohorivka, 21.06.2021 — single sp.; Berezove, 21.06.2021 and 27.06.2021 — single sp.; 'Lipovi', 28.06.2021, 04.07.2021 and 11.07.2021 — single sp.; Shpylivka, 24.06.2013 — single sp.; Sukhodol, 21.06.2021 — single sp.

***Ochlodes sylvanus* (Esper, [1777])**

Material. 'Lipovi', 27.06.2021 — 1 sp., 28.06.2021 — 1 sp., 04.07.2021 — 10 sp., 11.07.2021 — 1 sp.; Shpylivka, 24.08.2013 — 1 sp.

Family PIERIDAE Swainson, 1820

***Leptidea sinapis* (Linnaeus, 1758)**

Material. Berezove, 01.08.2021 — 1 ♂ (MNKU).

***Anthocharis cardamines* (Linnaeus, 1758)**

Material. Shpylivka, 16.05.2021 — 1 ♂.

***Pieris brassicae* (Linnaeus, 1758)**

Material. Bilohorivka, 25.04.2021 — 1 sp.; 'Lipovi', 27.06.2021 — 1 sp., 11.07.2021 — 1 sp.

***Pieris rapae* (Linnaeus, 1758)**

Material. 'Lipovi', 01.08.2021 — 5 sp.

***Pieris napi* (Linnaeus, 1758)**

Material. 'Lipovi', 04.07.2021 — 5 sp., 01.08.2021 — 10 sp.

***Pontia edusa* (Fabricius, 1777)**

Material. Bilohorivka, Berezove and Malyi Sukhodol, 25.04.2021 — hundreds sp., 29.05.2021 — 5 sp., 21.06.2021 — single sp.; 'Lipovi', 04.07.2021 — 10 sp., 11.07.2021 — 15 sp., 22.08.2021 — 3 sp.; Shpylivka, 24.06.2013, 20.09.2020 and 25.04.2021 — common.

***Colias erate* (Esper, 1805)**

Material. Berezove, 01.08.2021 — 2 ♂♂; Shpylivka, 24.06.2013 — 1 ♂.

***Colias croceus* (Geoffroy in Fourcroy, 1785)**

Material. Bilohorivka, 04.07.2021 — 1 ♂ (MNKU); Berezove, 04.07.2021 — 1 ♂, 22.08.2021 — 2 ♂♂.

***Colias hyale* (Linnaeus, 1758) & *Colias alfacariensis* Ribble, 1905**

Material. Berezove, 16.05.2021 — 30 sp., 11.07.2021 — 20 sp., 01.08.2021 — 15 sp., 22.08.2021 — 40 sp.; 'Lipovi', 28.06.2021 — 10 sp.; Shpylivka, 24.06.2013 — 1 ♀ on *Securigera varia*; Sukhodol, 04.07.2021 — 1 sp.

***Gonepteryx rhamni* (Linnaeus, 1758)**

Material. Bilohorivka, 16.05.2021 — 1 ♀; 'Lipovi', 28.06.2021 — 1 sp.; Shypylyvka, 24.06.2013 — 1 sp., 09.03.2020 — 1 sp.

Family LYCAENIDAE Leach, 1815***Satyrium pruni* (Linnaeus, 1758)**

Material. 'Pidomna', 21.06.2021 — 1 sp.

***Satyrium spini* ([Denis et Schiffermüller], 1775)**

Material. 'Lipovi', 27.06.2021 — 1 sp., 28.06.2021 — 3 sp., 04.07.2021 — 6 sp., 11.07.2021 — 1 sp.; 'Pidomna', 21.06.2021 — 2 sp.; Shypylyvka, 24.06.2013 — 1 sp.

***Satyrium acaciae* (Fabricius, 1787)**

Material. 'Lipovi', 27.06.2021 — 1 sp., 28.06.2021 — 5 sp.; Malyi Sukhodol, 27.06.2021 — 1 sp.

***Callophris rubi* (Linnaeus, 1758)**

Material. Bilohorivka, 23.05.2021 — 1 sp., 29.05.2021 — 1 sp. 'Pidomna', 21.06.2021 — 1 sp.; 'Lipovi', 11.07.2021 — 1 sp.; Shypylyvka, 16.05.2021 — 1 sp.

***Thecla betulae* (Linnaeus, 1758)**

Material. 'Lipovi', 22.08.2021 — 1 sp.

***Favonius quercus* (Linnaeus, 1758)**

Material. 'Lipovi', 11.07.2021 — 1 sp.; 'Pidomna', 21.06.2021 — 1 sp.

***Lycaena tityrus* (Poda, 1761)**

Material. Berezove, 18.09.2021 — 1 sp.; 'Lipovi', 11.07.2021 — 1 sp., 24.07.2021 — 1 sp.

***Lycaena thersamon* (Esper, [1784])**

Material. Berezove, 23.05.2021 — 1 sp.

***Cupido osiris* (Meigen, [1829])**

Material. Berezove, 23.05.2021 — 3 sp., 04.07.2021 — 3 sp., 11.07.2021 — 5 sp., 01.08.2021 — 2 sp.; 'Lipovi', 11.07.2021 — 1 sp.; Shypylyvka, 24.06.2013 — common near *Onobrychis*; Sukhodol, 04.07.2021 — 1 sp.

***Cupido argiades* (Pallas, 1771)**

Material. Berezove, 25.07.2021 — 1 sp., 01.08.2021 — 5 sp.; 'Lipovi', 28.06.2021 — 3 sp., 04.07.2021 — 1 sp.; Malyi Sukhodol, 05.09.2021 — 1 sp.; Shypylyvka, 21.06.2021 — 1 sp.

***Celastrina argiolus* (Linnaeus, 1758)**

Material. Berezove, 27.06.2021 — 1 sp.; 'Lipovi', 28.06.2021 — 1 sp., 04.07.2021 — 1 sp., 11.07.2021 — 3 sp.; Shypylyvka, 24.06.2013 — 1 sp.

***Pseudophilotes vicrama* (Moore, 1865) (Fig. 17)**

Material. Bilohorivka, 16.05.2021 — 6 ♂♂, 23.05.2021 — 4 ♂♂, 29.05.2021 — 3 sp., 04.07.2021 — 3 sp.; Shypylyvka, 06.06.2021 — 1 sp.; Sukhodol, 04.07.2021 — 1 sp.

***Pseudophilotes bavius* (Eversmann, 1832) (Fig. 18)**

Material. 'Lipovi', 28.06.2021 — 1 ♂.

***Glaucopsyche alexis* (Poda, 1761)**

Material. Bilohorivka, 16.05.2021 — 1 sp., 13.06.2021 — 2 sp.; Berezove, 16.05.2021 — 3 sp., 23.05.2021 — 1 sp., 11.07.2021 — 2 sp.; Malyi Sukhodol, 29.05.2021 — 2 sp.; Shypylyvka, 29.05.2021 — 1 sp.

***Phengaris arion* (Linnaeus, 1758)**

Material. 'Lipovi', 28.06.2021 — 1 sp.

***Plebejus argus* (Linnaeus, 1758)**

Material. Bilohorivka, 23.05.2021 — 1 sp., 29.05.2021, 06.06.2021 and 13.06.2021 — common: males near a puddle; Berezove, 23.05.2021 — hundreds of males, 29.05.2021 — thousands of males near a puddle and single females on *Salvia*, 27.06.2021 and 24.07.2021 — abundant, 01.08.2021 — hundreds; 'Lipovi', 28.06.2021 — 10 sp., 04.07.2021 — 20 sp., 11.07.2021 — common, 22.06.2021 — 5 sp.; Shypylyvka, 24.06.2013; Sukhodol, 29.05.2021 — common.

***Plebejus argyrognomon* (Bergsträsser, 1779)**

Material. 'Lipovi', 28.06.2021 — 1 ♂ (MNKU).

***Cyaniris semiargus* (Rottemburg, 1775)**

Material. Berezove, 23.05.2021 — 2 sp., 29.05.2021 — 7 sp.; 'Lipovi', 28.06.2021 — 1 sp.; Malyi Sukhodol, 29.05.2021 — 5 sp.; 'Pidiomna', 21.06.2021 — 1 sp.

***Lysandra bellargus* (Rottemburg, 1775)**

Material. Berezove, 28.06.2021 — 1 sp., 22.08.2021 — 3 sp.; 'Lipovi', 28.06.2021 — 1 sp.; Shypylyvka, Sukhodol, 21.06.2021 — 2 sp.

***Lysandra coridon* (Poda, 1761)**

Material. Bilohorivka, 25.07.2021 — 1 sp.; Berezove, 24.07.2021, 01.08.2021 — 60 sp., 22.08.2021 — 30 sp., 05.09.2021 — 5 sp.

***Polyommatus amandus* (Schneider, 1792)**

Material. Berezove, 29.05.2021 — 6 sp.; Malyi Sukhodol, 29.05.2021 — 3 sp.; Sukhodol, 23.05.2021 — 1 sp.; Shypylyvka, 29.05.2021 — 2 sp.

***Polyommatus thersites* (Cantener, [1835])**

Material. Berezove, 17.05.2021 — 1 ♂ (MNKU), 23.05.2021 — 1 sp.; 'Lipovi', 28.06.2021 — 1 sp., 04.07.2021 — 1 sp.

***Polyommatus icarus* (Rottemburg, 1775)**

Material. Berezove, 23.05.2021 — 5 sp., 29.05.2021 — 2 sp., 04.07.2021 — 1 sp., 11.07.2021 — common, 24.07.2021 — common, 01.08.2021 — 25 sp., 22.08.2021 — 30 sp., 05.09.2021 — 10 sp., 18.09.2021 — 20 sp.; 'Lipovi', 28.06.2021 — 2 sp., 04.07.2021 — 1 sp., 11.07.2021 — common; Shypylyvka, 24.06.2013, 20.09.2020 — 2 ♂♂ и 2 ♀♀, 04.07.2021 — 1 sp.

***Polyommatus damone* (Eversmann, 1841) (Fig. 19)**

Material. Berezove, 21.06.2021 — 2 ♂♂, 04.07.2021 — 1 ♂, 01.08.2021 — 2 ♂♂; Shypylyvka, 27.06.2021 — 4 ♂♂, 05.09.2021 — 1 ♀.

Family NYMPHALIDAE Rafinesque, 1815

***Boloria euphrosyne* (Linnaeus, 1758)**

Material. 'Pidiomna', 29.05.2021 — 1 sp.

***Boloria dia* (Linnaeus, 1767)**

Material. Bilohorivka, 03.05.2021 — 1 sp., 16.05.2021 — 3 sp., 21.06.2021 — 4 sp.; Berezove, 21.06.2021 — 4 sp., 24.07.2021 — 1 sp., 01.08.2021 — 10 sp.; 'Lipovi', 27.06.2021 — 1 sp., 28.06.2021 — 15 sp., 04.07.2021 — 5 sp., 11.07.2021 — 4 sp., 22.08.2021 — 2 sp.; Sukhodol, 21.06.2021 — 10 sp., 18.09.2021 — 1 sp.

***Argynnis paphia* (Linnaeus, 1758)**

Material. 'Lipovi', 11.07.2021 — 2 sp., 24.07.2021 — 1 sp.; Shypylyvka, 24.06.2013 — 1 sp.

***Argynnis pandora* ([Denis et Schiffermüller], 1775)**

Material. 'Lipovi', 04.07.2021 — 1 sp.

***Fabriciana niobe* (Linnaeus, 1758)**

Material. Bilohorivka, 13.06.2021 — 1 sp.; 'Lipovi', 27.06.2021 — 1 sp., 28.06.2021 — 3 sp., 04.07.2021 — 1 sp.

***Euphydryas aurinia* (Rottemburg, 1775)**

Material. Bilohorivka, 23.05.2021 — 1 sp.

***Vanessa atalanta* (Linnaeus, 1758)**

Material. Berezove, 11.07.2021 — 1 sp.; 'Lipovi', 28.06.2021 — 1 sp., 04.07.2021 — 1 sp., 24.07.2021 — 1 sp.

***Vanessa cardui* (Linnaeus, 1758)**

Material. Bilohorivka, 23.05.2021 — 1 sp., 13.06.2021 — 1 sp.; Berezove, 25.04.2021 — 1 sp., 16.05.2021 — 1 sp., 04.07.2021 — 2 sp.; 'Lipovi', 28.06.2021 — 4 sp., 11.07.2021 — 1 sp.; Shypylyvka, 24.06.2013 — 1 sp.

***Aglais io* (Linnaeus, 1758)**

Material. Berezove, 28.06.2021 — 1 sp.

***Polygonia c-album* (Linnaeus, 1758)**

Material. 'Lipovi', 27.06.2021 — 1 sp., 28.06.2021 — 1 sp., 04.07.2021 — 1 sp.; Sukhodol, 09.03.2020 — 1 sp., 21.06.2021 — 1 sp.

***Coenonympha pamphilus* (Linnaeus, 1758)**

Material. Bilohorivka, 13.06.2021 and 21.06.2021 — common; Berezove, 29.05.2021 — single fresh sp., 21.06.2021 and 27.06.2021 — common, 05.09.2021 — single sp., 18.09.2021 — 20 sp.; 'Lipovi', 28.06.2021, 04.07.2021 and 11.07.2021 — common,

22.08.2021 — 30 sp., 05.09.2021 — 1 sp.; Malyi Sukhodol, 21.06.2021 — common; Shypylivka, 24.06.2013 and 20.09.2020 — common. Sukhodol, 21.06.2021 — common.

***Coenonympha arcania* (Linnaeus, 1761)**

Material. ‘Lipovi’, 27.06.2021, 28.06.2021 and 04.07.2021 — common; Malyi Sukhodol, 24.06.2013 — 1 sp.; ‘Pidiomna’, 29.05.2021 and 21.06.2021 — single sp.

***Pararge aegeria* (Linnaeus, 1758)**

Material. Bilohorivka, 03.05.2021 — 1 sp.; Shypylivka, 24.06.2013 — 1 sp.

***Aphanthopus hyperantus* (Linnaeus, 1758)**

Material. ‘Lipovi’, 04.07.2021 — 1 sp.

***Maniola jurtina* (Linnaeus, 1758)**

Material. Bilohorivka, 21.06.2021 — common; Berezove, 21.06.2021, 27.06.2021 and 05.09.2021 — common; ‘Lipovi’, 28.06.2021 — common; Shypylivka, 24.06.2013 — 1 sp.

***Melanargia galathea* (Linnaeus, 1758)**

Material. ‘Lipovi’, 28.06.2021 — 15 sp., 04.07.2021 — 100 sp., 11.07.2021 — common; ‘Pidiomna’, 21.06.2021 — common; Shypylivka, 24.06.2013 — 3 sp.

***Arethusana arethus* ([Denis et Schiffermüller], 1775) (Fig. 20)**

Material. Bilohorivka, 25.07.2021 — 3 sp.; Berezove, 25.07.2021 — 1 sp., 01.08.2021 — 50 sp., 22.08.2021 — 100 sp. (including mating pairs and worn specimens), 05.09.2021 — 8 sp.; ‘Lipovi’, 24.07.2021 — 1 sp., 01.08.2021 — several tens of sp.; Sukhodol, 25.07.2021 — 5 sp.

Superfamily PYRALOIDEA Latreille, 1809

Family PYRALIDAE Latreille, 1809

***Delplanqueia inscriptella* (Duponchel, 1836)**

Material. Bilohorivka, 21.06.2021 — 1 sp. (IEEK).

***Hypochoalcia ahenella* ([Denis et Schiffermüller], 1775)**

Material. Malyi Sukhodol, 29.05.2021 — 1 sp.; Shypylivka, 06.06.2021 — 1 sp.

***Epischnia adultella* Zeller, 1848**

Material. Bilohorivka, 25.07.2021 — 2 sp.; Berezove, 24.07.2021 — 3 sp.; ‘Lipovi’, 01.08.2021 — 2 sp.

***Epischnia cretaciella* Mann, 1869 (Fig. 21)**

Material. Bilohorivka, 25.07.2021 — 3 sp. (IEEK, det. Yepishin V.); Berezove, 24.07.2021 — 3 sp. (IEEK, det. Yepishin V.). All on open chalk outcrops.

Remarks. Second location of this species in Luhansk region and mainland Ukraine.

***Episcythrastis tetricella* ([Denis et Schiffermüller], 1775)**

Material. Bilohorivka, 29.05.2021 — 1 sp.

***Pterothrixidia rufella* (Duponchel, 1836) s.l.**

Material. Berezove, 23.05.2021 — 1 sp., 05.09.2021 — 1 sp.

***Homoeosoma sinuella* (Fabricius, 1794)**

Material. Berezove, 29.05.2021 — 3 sp.; ‘Lipovi’, 11.07.2021 — 1 sp.; Shypylivka, 13.06.2021 — 1 sp.

***Cadra furcatella* (Herrich-Schäffer, [1849])**

Material. Berezove, 29.05.2021 — 1 sp. (IEEK).

Family CRAMBIDAE Latreille, 1810

***Scoparia pyralis* ([Denis et Schiffermüller], 1775)**

Material. Malyi Sukhodol, 27.06.2021 — 1 sp.

***Heliothela wulfeniana* (Scopoli, 1763)**

Material. Bilohorivka, 21.06.2021 — 1 sp.; Shypylivka, 13.06.2021 — 1 sp.

***Euchromius ocella* (Haworth, [1811])**

Material. Berezove, 22.08.2021 — 5 sp., 18.09.2021 — 1 sp.; ‘Lipovi’, 05.09.2021 — 1 sp.

***Agriphila tristella* ([Denis et Schiffermüller], 1775)**

Material. 'Lipovi', 22.08.2021 — 2 sp.

***Agriphila inquinatella* ([Denis et Schiffermüller], 1775)**

Material. 'Lipovi', 22.08.2021 — 1 sp.

***Catoptria lythargyrella* (Hübner, 1796)**

Material. Berezove, 05.09.2021 — 1 sp.

***Chrysocramboides craterella* (Scopoli, 1763)**

Material. Berezove, 04.07.2021 — 1 sp.; Malyi Sukhodol, 21.06.2021 — 1 sp.

***Thisanotia chrysonuchella* (Scopoli, 1763)**

Material. Berezove, 16.05.2021 — 2 sp., 23.05.2021 — 2 sp.

***Pediasia luteella* ([Denis et Schiffermüller], 1775)**

Material. 'Lipovi', 11.07.2021 — 3 sp.

***Cynaeda dentalis* ([Denis et Schiffermüller], 1775)**

Material. Berezove, 21.06.2021 — 1 sp.

***Atralata albofascialis* (Treitschke, 1829)**

Material. Bilohorivka, 16.05.2021 — 3 sp.

****Eurrhysis pollinalis* ([Denis et Schiffermüller], 1775) (Fig. 22)**

Material. Bilohorivka, 16.05.2021 — 1 sp., 23.05.2021 — 1 sp.

***Evergestis frumentalis* (Linnaeus, 1761)**

Material. Bilohorivka, 16.05.2021 — 1 sp.

***Loxostege sticticalis* (Linnaeus, 1761)**

Material. Bilohorivka, 24.06.2013 — 1 sp.; 'Lipovi', 11.07.2021 — 5 sp., 01.08.2021 — 1 sp., 05.09.2021 — 3 sp.

***Pyrausta sanguinalis* (Linnaeus, 1767)**

Material. Berezove, 16.05.2021 — 1 sp.; 'Lipovi', 04.07.2021 — 10 sp., 11.07.2021 — 1 sp., 24.07.2021 — 1 sp.

***Pyrausta despicata* (Scopoli, 1763)**

Material. Berezove, 27.06.2021 — 1 sp.; 'Lipovi', 22.08.2021 — 1 sp.; Sukhodol, 25.04.2021 — 10 sp., 03.05.2021 — 1 sp.

***Pyrausta aurata* (Scopoli, 1763)**

Material. 'Lipovi', 28.06.2021 — 1 sp., 04.07.2021 — 5 sp., 11.07.2021 — 3 sp.

***Sitochroa verticalis* (Linnaeus, 1758)**

Material. Bilohorivka, 13.06.2021 — 1 sp.

***Psammodis pulveralis* (Hübner, 1796)**

Material. 'Lipovi', 11.07.2021 — 1 sp.

***Udea languidalis* (Eversmann, 1842)**

Material. 'Lipovi', 24.07.2021 — 1 sp.

***Dolicharthria punctalis* ([Denis et Schiffermüller], 1775)**

Material. Berezove, 22.08.2021 — 1 sp.

***Nomophila noctuella* ([Denis et Schiffermüller], 1775)**

Material. Berezove, 27.06.2021 — 1 sp.; 'Lipovi', 11.07.2021 — 1 sp., 01.08.2021 — 1 sp., 05.09.2021 — 2 sp.

Superfamily GEOMETROIDEA Leach, 1815

Family GEOMETRIDAE Leach, 1815

***Idaea aureolaria* ([Denis et Schiffermüller], 1775)**

Material. Bilohorivka, 06.06.2021 — 2 sp., 13.06.2021 — 8 sp.; Berezove, 21.06.2021 — common.; 'Lipovi', 28.06.2021 — 1 sp.

***Idaea rufaria* (Hübner, [1799])**

Material. 'Lipovi', 04.07.2021 — 5 sp.

***Idaea sericeata* (Hübner, [1813])**

Material. Bilohorivka, 13.06.2021 — 2 sp.; 'Lipovi', 28.06.2021 — 1 sp.

***Idaea moniliata* ([Denis et Schiffermüller], 1775)**

Material. 'Lipovi', 04.07.2021 — 1 sp.

***Idaea dilutaria* (Hübner, [1799])**

Material. 'Lipovi', 27.06.2021 — 1 sp.; 'Pidiomna', 21.06.2021 — 1 sp.

***Idaea humiliata* (Hufnagel, 1767)**

Material. Berezove, 21.06.2021 — common, 27.06.2021 — 1 sp.; 'Lipovi', 04.07.2021 — 10 sp.

***Idaea aversata* (Linnaeus, 1758)**

Material. Malyi Sukhodol, 21.06.2021 — 1 sp.

***Scopula tessellaria* (Boisduval, 1840)**

Material. 'Lipovi', 01.08.2021 — 2 sp.

***Scopula virgulata* ([Denis et Schiffermüller], 1775)**

Material. Berezove, 27.06.2021 — 1 sp.; 'Lipovi', 22.08.2021 — 1 sp., 05.09.2021 — 1 sp.

***Scopula ornata* (Scopoli, 1763)**

Material. Bilohorivka, 13.06.2021 — 1 sp.; 'Lipovi', 04.07.2021 — 1 sp., 11.07.2021 — 1 sp., 24.07.2021 and 22.08.2021 — 1 sp.

***Scopula decorata* ([Denis et Schiffermüller], 1775)**

Material. Berezove, 24.07.2021 — 1 sp.; Sukhodol, 05.09.2021 — 1 sp.

***Scopula rubiginata* (Hufnagel, 1767)**

Material. Berezove, 23.05.2021 — 1 sp., 29.05.2021 — 1 sp.; 'Lipovi', 11.07.2021 — 1 sp.

***Scopula marginepunctata* (Goeze, 1781)**

Material. Bilohorivka, 25.07.2021 — 1 sp.

***Scopula incanata* (Linnaeus, 1758)**

Material. Bilohorivka, 13.06.2012 — 1 sp.

***Scopula subpunctaria* (Herrich-Schäffer, 1847)**

Material. 'Lipovi', 04.07.2021 — 1 sp.

***Scopula immistaria* (Herrich-Schäffer, [1852])**

Material. Bilohorivka, 17.05.2021 — 1 ♀ (MIXY), 21.06.2021 — 1 sp., 25.07.2021 — 1 sp.; 'Lipovi', 28.06.2021 — 2 sp., 11.07.2021 — 1 sp., 22.08.2021 — 1 sp.

***Rhodostrophia vibicaria* (Clerck, 1759)**

Material. Bilohorivka, 11.06.2021 — 1 sp.; 'Pidiomna', 21.06.2021 — 1 sp.

***Cyclophora annularia* (Fabricius, 1775)**

Material. 'Lipovi', 11.07.2021 — 1 sp.

***Timandra comae* Schmidt, 1931**

Material. 'Lipovi', 11.07.2021 — 2 sp., 24.07.2021 — 2 sp., 01.08.2021 — 1 sp., 22.08.2021 — 3 sp., 05.09.2021 — 5 sp.

***Lythria purpuraria* (Linnaeus, 1758)**

Material. Berezove, 01.08.2021 — 1 sp.; 'Lipovi', 05.09.2021 — 1 sp.

***Cataclysmes riguata* (Hübner, [1813])**

Material. Bilohorivka, 16.05.2021 — 2 sp., 23.05.2021 — 3 sp.

***Scotopteryx coarctaria* ([Denis et Schiffermüller], 1775)**

Material. Bilohorivka, 16.05.2021 — 11 sp., 23.05.2021 — 3 sp., 29.05.2021 — 1 sp.

***Scotopteryx luridata* (Hufnagel, 1767)**

Material. 'Pidiomna', 21.06.2021 — 1 ♀ (MNKU).

***Camptogramma bilineata* (Linnaeus, 1758)**

Material. 'Pidiomna', 21.06.2021 — 1 sp.

***Microloxia herbaria* (Hübner, [1813])**

Material. Bilohorivka, 25.07.2021 — 1 sp.

***Chlorissa viridata* (Linnaeus, 1758)**

Material. 'Lipovi', 01.08.2021 — 1 sp.; Malyi Sukhodol, 29.05.2021 — 1 sp.

***Orthostixis cribraria* (Hübner, [1799]) (Fig. 23)**

Material. 'Lipovi', 28.06.2021 — 2 sp.

Remarks. First recent record in Luhansk region after (Medvedev, 1950).

***Selenia lunularia* (Hübner, 1788)**

Material. 'Lipovi', 24.07.2021 — 1 sp.

***Pseudopanthera macularia* (Linnaeus, 1758)**

Material. Malyi Sukhodol, 17.05.2021 — 1 sp.

***Heliomata glarearia* ([Denis et Schiffermüller], 1775)**

Material. Berezove, 23.05.2021 — 1 sp., 01.08.2021 — 1 sp.; 'Lipovi', 22.08.2021 — 5 sp.; 'Pidiomna', 21.06.2021 — 1 sp.; Shypylyvka, 24.06.2013 — 1 sp., 06.06.2021 — 1 sp.

***Macaria alternata* ([Denis et Schiffermüller], 1775)**

Material. 'Lipovi', 24.07.2021 — 1 sp.

***Isturgia arenacearia* ([Denis et Schiffermüller], 1775)**

Material. Berezove, 22.08.2021 — 1 sp.; 'Lipovi', 04.07.2021 — 1 sp., 24.07.2021 — 1 sp.

***Isturgia murinaria* ([Denis et Schiffermüller], 1775)**

Material. Berezove, 03.05.2021 — 1 sp., 16.05.2021 — 1 sp., 17.05.2021 — 3 sp., 29.05.2021 — 1 sp., 24.07.2021 — 1 sp.; 'Lipovi', 11.07.2021 — 1 sp.

***Siona lineata* (Scopoli, 1763)**

Material. Bilohorivka, 23.05.2021 — 1 sp.

***Ematurga atomaria* (Linnaeus, 1758)**

Material. Berezove, 03.05.2021 — 1 sp.; 'Lipovi', 24.07.2021 — 1 sp.

***Peribatodes rhomboidaria* ([Denis et Schiffermüller], 1775)**

Material. Malyi Sukhodol, 27.06.2021 — 1 sp. on trunks of *Quercus robur*.

***Cleora cinctaria* ([Denis et Schiffermüller], 1775)**

Material. Bilohorivka, 03.05.2021 — 1 sp.

Superfamily BOMBYCOIDEA Latreille, 1802

Family SPHINGIDAE Latreille, 1802

***Marumba quercus* ([Denis et Schiffermüller], 1775) (Fig. 24)**

Material. 'Pidiomna', 25.07.2021 — 1 larva on a young *Quercus* tree.

***Macroglossum stellatarum* (Linnaeus, 1758)**

Material. 'Pidiomna', 16.05.2021 — 1 sp.; 'Lipovi', 05.09.2021 — 1 sp.

Superfamily NOCTUOIDEA Latreille, 1809

Family EREBIDAE Leach, 1815

***Orgyia antiquoides* (Hübner, [1822])**

Material. Sukhodol, 05.09.2021 — 1 larva on a road.

***Arctia festiva* (Hufnagel, 1766)**

Material. Sukhodol, 09.03.2020 — several tens of larvae, 18.04.2021 — 1 larva, 24.10.2021 — 30 larvae, along roads.

***Euplagia quadripunctaria* (Poda, 1761)**

Material. 'Lipovi', 24.07.2021 — 1 sp.

***Miltochrista miniata* (Forster, 1771)**

Material. Bilohorivka, 21.06.2021 — 1 sp.

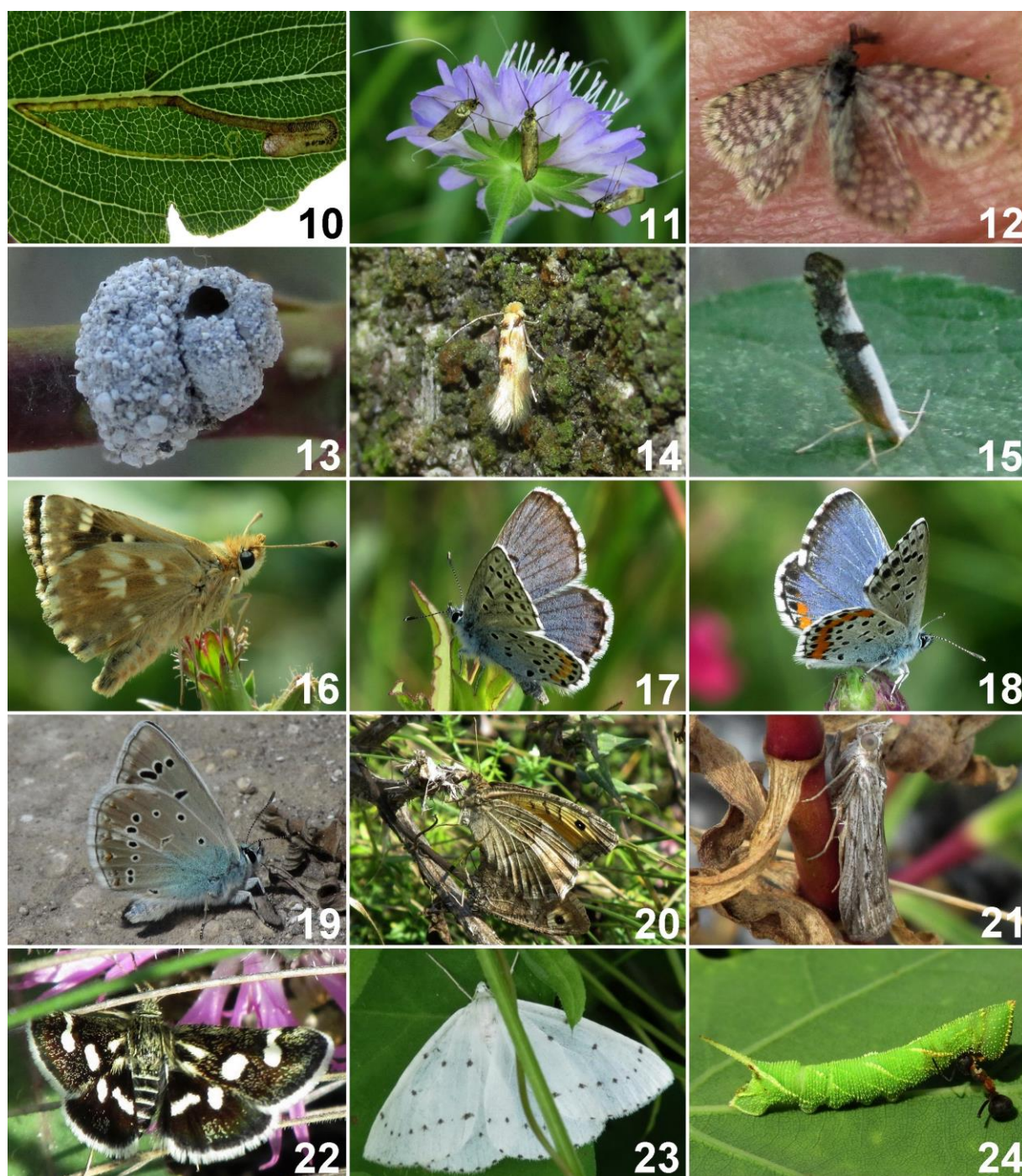


Fig. 10–24. Species of Lepidoptera, rare or new for Luhansk Region, from NW environs of Lysychansk: 10 — *Stigmella catharticella*, empty mine on *Rhamnus cathartica*, 11.07.2021; 11 — *Nemophora metallica*, imago, 28.06.2021; 12 — *Whittleia undulella*, ♂, 03.05.2021; 13 — *Apterona helicoidella*, case, 24.07.2021; 14 — *Bucculatrix thoracella*, imago, 11.07.2021; 15 — *Argyresthia spinosella*, imago, 29.05.2021; 16 — *Muschampia proteides*, imago, 01.08.2021; 17 — *Pseudophilotes vicrama*, ♂, 29.05.2021; 18 — *Pseudophilotes bavius*, ♂, 28.06.2021; 19 — *Polyommatus damone*, imago, 21.06.2021; 20 — *Arethusana arethusana*, mating pair, 22.08.2021; 21 — *Epischmia cretaciella*, imago, 25.07.2021; 22 — *Eurrhysis pollinalis*, imago, 16.05.2021; 23 — *Orthostixis cribraria*, imago, 28.06.2021; 24 — *Marumba quercus*, larva, 25.07.2021.

***Eilema pygmaeola* (Doubleday, 1847)**

Material. Sukhodol, 13.06.2021 — 1 ♂ (MNKU).

***Eilema lurideola* ([Zincken], 1817)**

Material. 'Lipovi', 27.06.2021 — 1 sp., 28.06.2021 — 2 sp.

***Amata phegea* (Linnaeus, 1758)**

Material. 'Lipovi', 28.08.2021 — 15 sp.; Shpylyivka, 21.06.2021 — 1 sp.

***Dysauxes ancilla* (Linnaeus, 1767)**

Material. 'Lipovi', 28.06.2021 — 1 sp.

***Paracolax tristalis* (Fabricius, 1794)**

Material. 'Lipovi', 27.06.2021 — 1 sp., 28.06.2021 — 5 sp.

***Zanclognatha lunalis* (Scopoli, 1763)**

Material. Bilohorivka, 13.06.2021 — 1 sp.; 'Lipovi', 27.06.2021 — 1 sp., 04.07.2021 — 5 sp.; 'Pidiomna', 21.06.2021 — 1 sp.

***Phytometra viridaria* (Clerck, 1759)**

Material. Bilohorivka, 03.05.2021 — 60 sp., 16.05.2021 — 25 sp., 29.05.2021 — 1 sp., 21.06.2021 — common, 25.07.2021 — 1 sp.; 'Lipovi', 04.07.2021 — 1 sp.; Shpylyivka, 24.06.2013 — 1 sp.

***Eublemma minutata* (Fabricius, 1794)**

Material. Berezove, 11.07.2021 — 2 sp.

***Catocala promissa* ([Denis et Schiffermüller], 1775)**

Material. 'Pidiomna', 21.06.2021 — 1 sp.

***Euclidia glyphica* (Linnaeus, 1758)**

Material. Berezove, 16.05.2021 — 12 sp., 24.07.2021 — 1 sp.; 'Lipovi', 04.07.2021 — 3 sp., 11.07.2021 — 10 sp., 22.08.2021 — 1 sp.; Malyi Sukhodol, 29.05.2021 — 1 sp.; Sukhodol, 27.06.2021 — 1 sp.

Family NOCTUIDAE Latreille, 1809

***Autographa gamma* (Linnaeus, 1758)**

Material. Bilohorivka, 23.05.2021 — 1 sp., 13.06.2021 — 1 sp.; 'Lipovi', 28.06.2021 — 10 sp., 04.07.2021 — 50 sp., 11.07.2021 — common, 24.07.2021 — 1 sp., 22.08.2021 — 1 sp.

***Acontia candefacta* (Hübner, [1831])**

Material. Sukhodol, 05.09.2021 — 1 sp.

***Acontia melanura* (Tauscher, 1809)**

Material. Berezove, 25.07.2021 — 1 sp.; 'Lipovi', 27.06.2021 — 1 sp., 28.06.2021 — 2 sp., 11.07.2021 — 1 sp.

***Acontia trabealis* (Scopoli, 1763)**

Material. Bilohorivka, 21.06.2021 — 1 sp.; 'Lipovi', 28.06.2021 — 1 sp., 04.07.2021 — 3 sp., 11.07.2021 — 1 sp., 05.09.2021 — 2 sp.; Malyi Sukhodol, 22.05.2021 — 1 sp.

***Simyra nervosa* ([Denis et Schiffermüller], 1775)**

Material. Sukhodol, 24.10.2021 — 1 larva.

***Oxicesta geographica* (Fabricius, 1787)**

Material. Berezove, 21.06.2021 and 24.07.2021; 'Lipovi', 28.06.2021 and 18.09.2021 — larvae in a nest on *Euphorbia*, rare single larvae; Sukhodol, 05.08.2021 — 1 larva near a road, 24.10.2021 — 2 larvae on a road.

***Aegle kaekeritziana* (Hübner, [1799])**

Material. 'Lipovi', 04.07.2021 — 1 sp.

***Tyta luctuosa* ([Denis et Schiffermüller], 1775)**

Material. Berezove, 17.05.2021 — 1 sp.; 'Lipovi', 28.06.2021 — 1 sp., 04.07.2021 — 1 sp., 24.07.2021 — 1 sp.; Malyi Sukhodol, 22.05.2021 — 1 sp.

***Cucullia absinthii* (Linnaeus, 1761)**

Material. 'Lipovi', 05.09.2021 — 1 larva on *Artemisia*.

Cucullia asteris* ([Denis et Schiffermüller], 1775)*Material.** 'Lipovi', 05.09.2021 — 1 larva.***Calophasia opalina* (Esper, 1794)****Material.** 'Lipovi', 04.07.2021 — 1 larva.***Amphipyra pyramidea* (Linnaeus, 1758)****Material.** 'Lipovi', 22.08.2021 — 3 sp. under bark.***Amphipyra livida* ([Denis et Schiffermüller], 1775)****Material.** 'Lipovi', 18.09.2021 — 1 sp. under bark.***Heliothis adauca* Butler, 1878****Material.** Bilohorivka, 25.07.2021 — 1 sp.***Helicoverpa armigera* (Hübner, [1808])****Material.** Berezove, 18.09.2021 — 10 sp.; 'Lipovi', 11.07.2021 — 1 sp., 01.08.2021 — 1 sp., 22.08.2021 — 30 sp., 05.09.2021 — 100 sp.; Shypylyvka, 29.08.2021 — 200 sp.***Xylena exoleta* (Linnaeus, 1758)****Material.** 'Pidiomna', 04.06.2021 — 1 larva.***Apterogenum ypsilon* ([Denis et Schiffermüller], 1775)****Material.** Shypylyvka, 03.05.2021 — 5 larvae under bark of *Salix*.

Conclusions. According to the results of our research and the literature data, 233 species of Lepidoptera are found in the NW environs of Lysychansk, 204 of which are given for the first time, 7 of which (*Stigmella catharticella* (Stainton, 1853), *Nemophora metallica* (Poda, 1761), *Whittleia undulella* (Fischer von Röslerstamm, 1837), *Apterona helicoidella* (Vallot, 1827), *Bucculatrix thoracella* (Thunberg, 1794), *Argyresthia spinosella* Stainton, 1849, *Eurrhysis pollinalis* ([Denis et Schiffermüller], 1775)) are new records for Luhansk Region. Primarily due to daytime observations only, the list shows only a small part of the real species diversity of Lepidoptera in these places. The number of species of this area will increase several times if the light trapping will be used in future research.

Acknowledgments. The author is sincerely grateful to E. Karolinskiy (V. N. Karazin Kharkiv National University), V. Yepishin (Institute for Evolutionary Ecology of the National Academy of Sciences of Ukraine, Kyiv) who determined parts of the material and/or confirmed the determination of some critical taxa. Yu. Guglya (Museum of Nature of the V. N. Karazin Kharkiv National University) is acknowledged for the editing of the manuscript.

REFERENCES

- Ellis, W. N. 2022. *Plant Parasites of Europe: Leafminers, Galls and Fungi*. Last modified October 28, 2022. URL: <https://bladmineerders.nl>.
- Heikkilä, M., Mutanen, M., Kekkonen, M., Kaila, L. 2014. Morphology reinforces proposed molecular phylogenetic affinities: a revised classification for Gelechioidea (Lepidoptera). *Cladistics*, 30(6), 563–589. DOI: <https://doi.org/10.1111/cla.12064>.
- Kavurka, V. V., Demyanenko, S. O., Budashkin, Yu. I. 2021. Checklist of tortricid moths (Lepidoptera: Tortricidae) of Luhansk Region of Ukraine. *The Kharkov Entomological Society Gazette*, 29(2), 10–30. DOI: <https://doi.org/10.36016/KhESG-2021-29-2-2>.
- Lepiforum. 2022. URL: <https://lepiforum.org/wiki>. [Accessed: December 28, 2022].
- Medvedev, S. I. 1950. Preliminary report on the entomofauna of Proval'skaya steppe, Voroshilovgrad Region [Предварительное сообщение об изучении энтомофауны Провальской степи Ворошиловградской области]. *Proceedings of Biology Research Institute, Kharkiv State University [Труды Научно-исследовательского института биологии Харьковского государственного университета им. А. М. Горького]*, 14–15, 89–109. [in Russian]
- Nieukerken, E. J. van, Kaila, L., Kitching, I. J., Kristensen, N. P., Lees, D. C., Minet, J., Mitter, C., Mutanen, M., Regier, J. C., Simonsen, T. J., Wahlberg, N., Yen, S.-H., Zehner, R., Adamski, D., Baixeras, J., Bartsch, D., Bengtsson, B. Å., Brown, J. W., Bucheli, S. R., Davis, D. R., De Prins, J., De Prins, W., Epstein, M. E., Gentili-Poole, P., Gielis, C., Hättenschwiler, P., Hausmann, A., Holloway, J. D., Kallies, A., Karsholt, O., Kawahara, A. Y., Koster, J. C., Kozlov, M. V., Lafontaine, J. D., Lamas, G., Landry, J.-F., Lee, S., Nuss, M., Park, K.-T., Penz, C., Rota, J., Schintlmeister, A., Schmidt, B. C., Sohn, J.-C., Solis, M. A., Tarmann, G. M., Warren, A. D., Weller, S., Yakovlev, R. V., Zolotuhin, V. V. and Zwick, A. 2011. Order Lepidoptera Linnaeus, 1758. In: Zhang, Z.-Q., ed. *Animal biodiversity: An outline of higher-level classification and survey of taxonomic richness*, *Zootaxa*, 3148(1), 212–221. DOI: <https://doi.org/10.11646/zootaxa.3148.1.3>.
- Orlovskytė, S., Dobrynina, V., Stonis, J. R. 2023. Unexpected mitotype diversity of *Simplimorpha promissa* (Lepidoptera: Nepticulidae) in Ukraine and Armenia revealing a possible cryptic taxon. *Zootaxa*, 5336(1), 113–124. DOI: <https://doi.org/10.11646/zootaxa.5336.1.5>. [in press].
- POWO. 2022. *Plants of the World Online*. Facilitated by the Royal Botanic Gardens, Kew. URL: <http://www.plantsoftheworldonline.org>. [Accessed: September 19, 2022].